

C

C

F



ANNUAL REPORT 2018-19

Farm Folk

FARM PATRONS

Her Excellency the Honourable Linda Dessau AC Governor of Victoria and Mr Anthony Howard AM QC.

OUR FARM STAFF

Conor Hickey - *General Manager*
Bridget Bainbridge
Steve Costello
Susan Pitman
Sev Darwell
Mia Sutherland
Andrew Phillips
Nick Karavokiros
Toni Phillips
Katherine Russell
Helen Semmler
Tomas Todorovic
Michelle Jessop
Heather Baker
Eleanor Russell
Paul Morris
Shawn Augustin
Simeon Ash
Daniel Brown
Rachel Freeman
Synti Ng
Melina Newman
Bethany Murray
Annabelle Byass
Roger Cassar
Susan Ong
Nicholas Evans
Marg Welsh
Sam Imbrogno
Kettie Yu
Shane Doherty
Hugh Fitzgerald
Luella Martin
Lucinda Murphy
Oliver Morton-Rodaro
Megan Woods
Gary Ebdon

COMMITTEE OF MANAGEMENT

President: Lachlan Turner
Vice President: Jessica Gillespie
Treasurer: Jessica Lai
Secretary: Lachlan Cook
Josh Hale
Elisa Turco
Hamish Ride
Kieran Dickson
Chloe Horner
Nina Collins
Evan Zly
James Searle (Cr City of Yarra)
Conor Hickey
Mia Sutherland (staff rep.)
Helen Semmler (minutes)

The Collingwood Children's Farm respectfully acknowledges the Wurundjeri of the Kulin Federation as the traditional owners of the Abbotsford Precinct Heritage Farmlands, the lands we respect, care for and farm on behalf of all Victorians. The Farm thanks all Wurundjeri Elders past and present, for their guardianship of these lands



Our Reason for Being

COMMUNITY ENGAGEMENT

EDUCATION

NATURE CONNECTION with GREEN SPACE and ANIMALS

Collingwood Children's Farm supports social inclusion through a range of programs on a working community farm.

OUR AIMS:

- To develop self-esteem, self-worth and connectedness, particularly of children and those experiencing adversity.
- To facilitate participation of children and their families in broader community life and a connection to nature.
- To provide educational opportunities around urban agriculture for students and community as well as pathways to further employment.





Committee of Management

President's Report

The year ended June 2019 has been a year of consolidation for the Farm. Conor, our Farm manager, has had twelve months in the role and has enacted significant change across the Farm. From a Committee of Management perspective it has been fantastic to see the Farm improve dramatically across the board. A change in management is always an opportunity to adopt a fresh approach and Conor's appointment has been no different. Through her leadership, and together with an amazing group of staff, an army of committed volunteers and farm participants, the Farm is moving forward. Staffing structures, positions, and supervision has been revamped. Documentation, policies and processes have been developed. And most importantly engagement of individuals, groups and the community at large has been revitalised. A renewing of the Farm and its relationship to the community has been very much underway and it is fantastic to be a part of.

Every year we have a budding team of fresh talent to join the Farm Committee of Management and last year was no exception. The new members were Chloe Horner, Nina Collins (both vocationally involved with local council) and Evan Zly (a marketing professional). This year we were fortunate to be assigned Councillor James Searle as our City of Yarra Councillor representative. Many thanks to these individuals for their efforts throughout the year.

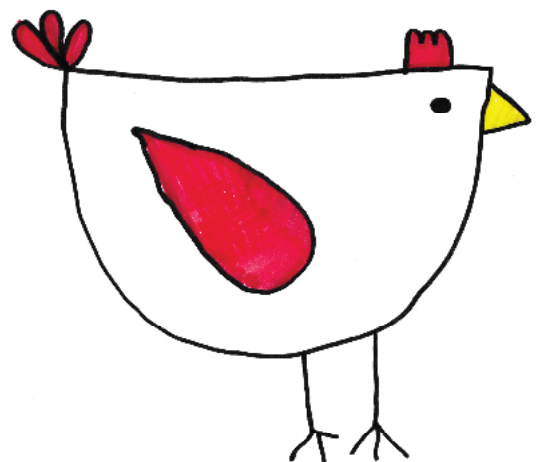
Regrettably we are having to say goodbye to some great talent from our Committee this year. These individuals are Hamish Ride, Jess Lai (another little one on the way!) and Jessica Gillespie. Thank you all for your incredible commitment and countless hours of service to the Farm and its mission.

The Farm is truly a great organisation to be a part of. Myself and all the Committee of Management members are all truly honoured to be a part of this wonderful community organisation. We all look forward to a productive and exciting next twelve months

Lachlan Turner

President, on behalf of the Collingwood Children's Farm Committee of Management

September 2019





Manager's Report

HAPPY 40th BIRTHDAY, COLLINGWOOD CHILDREN'S FARM!!!

What an achievement! Forty years of wonderful!

An enormous thank you and congratulations to all staff, committee, community, volunteers, friends and family who have contributed to the Farm over the past 40 years – and to everyone on board this year – we have achieved a great deal – so many changes, new systems, events, people, activities.... 2020 is certainly shaping up to be an exciting year with all these new things!

First things first though, our Birthday! We'll be throwing a massive party to say thank you to everyone who makes this place so great – a fundraiser of epic proportions showcasing the work of our local community with workshops, delicious food, local producers, storytellers and, of course, music! What a celebration it will be!

We are launching a Farm book, a Farm song and a podcast that chronicles the history of the Farm: the past 40 years as well as the times, events and people that shaped this place in the years before. Throughout the year, through the course of gathering interviews for the podcast; the research; the rifling through old articles and reports; the conversations with community, past and present; the reminiscing; the tales of old... it really emphasised the impact this place has had on such a vast number of people.

And what a privilege to be working in a space that means so much to so many people – and what a job to ensure it is well looked after for all the people yet to come. This past year has been a wonderful period of learning and growing and really refining what we are all about here at the farm – and it was no mean feat to nut that one out, let me tell you!

As a staff and a committee, we considered numerous ideas that might refine our purpose. We agreed that, while the Collingwood Children's Farm is many things to many people, three areas are at the forefront of what we do here:

- COMMUNITY ENGAGEMENT
- EDUCATION
- NATURE CONNECTION with GREEN SPACE and ANIMALS

Thinking back to the original reason this parcel of land was signed over to the committee to manage back in 1979, we acknowledged the importance of continuing to maintain this beautiful green space for the community. More specifically, those facing adversity. Given that we have identified we are here for the community, we must continually ask ourselves this question: *What is it the community needs most now?*

We believe, as we face this climate emergency, on an earth that is heating up, in an era where we spend more time staring at screens rather than engaging with people, more time indoors than amongst the trees, the best thing for us to do is remain an accessible oasis in the city. Country life for city folk.





As a community organisation passionate about education, we support strategies driven by councils around waste minimisation and greening public spaces. We have begun consultation with Dr Chris Williams on building programs around urban forestry, regenerative agriculture and horticulture in general on the Farm. Working with the Wurundjeri Tribe Council, we are building new gardens for the public to learn about Indigenous culture through the growing of indigenous and native plants. We will continue to work closely with our community to educate, young and old, about the little things we can all do to help in our own backyards and as a broader community. We intend to keep a beautiful, green space for that vital connection to nature, and to be a hub for community to engage with each other, in conversation and practice, around the things that matter and can make a difference. We will continue to teach people about food production and the importance of supporting local producers. We will continue to do our bit – as best we can.

In the spirit of sharing nice things, I read an opinion piece in a newspaper the other day and one paragraph stood out as a lovely reminder that the small things we do now can have a much bigger impact later:

It's fine to struggle against the constraints of human nature, hoping to mitigate the worst of what's to come, but it's just as important to fight smaller, more local battles that you have some realistic hope of winning. Keep doing the right thing for the planet, yes, but also keep trying to save what you love specifically—a community, an institution, a wild place, a species that's in trouble—and take heart in your small successes. Any good thing you do now is arguably a hedge against the hotter future, but the really meaningful thing is that it's good today. As long as you have something to love, you have something to hope for.

Franzen, J (2019) *The New Yorker*

The staff and our community here love Collingwood Children's Farm – and it really does bring me a sense of hope – especially when I can get so overwhelmed by the doom and gloom in the news. I only hope the passion for, in and around the happenings at CCF can provide a similar sense of hope for the community we aim to serve. And we are calling on the community to get behind us to help us ensure this place continues to be as amazing for the next forty years!

So, here's to the year that has been!

Enjoy the stories from our team and farm friends: a perfect snapshot of the people, the work, the learning, the community, the milestones, the hurdles and above all, the wonderfulness that is the Collingwood Children's Farm.

HAPPY BIRTHDAY, CCF and thank you – to all you community/enviro-minded folk that have kept this place vital and excellent.

See you at the party!

Conor Hickey

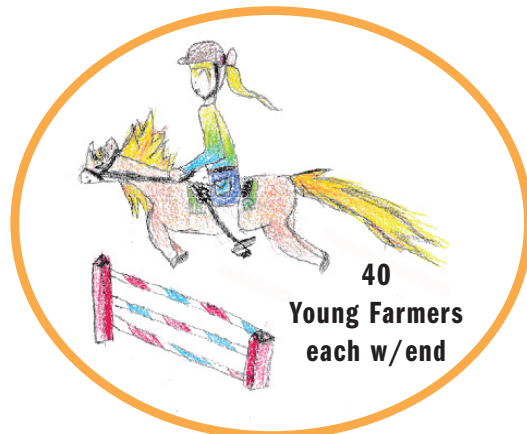
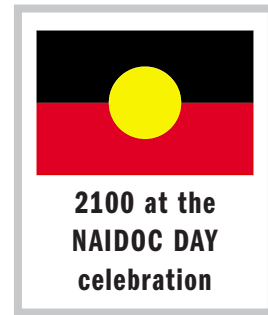


The Numbers



With an average of 15,000 people visiting per month, the farm really is a popular place.

Below is a breakdown of who and why people are visiting – and the numbers are growing!



Community Engagement

Collingwood Children's Farm continues to engage both the local and wider Victorian communities with a comprehensive suite of meaningful, practical and rewarding voluntary and work experience opportunities. Farm programs offer individuals the opportunity to build skills, develop relationships and contribute to (and feel a part of) community. With many participants experiencing adversity and social isolation, these experiences often prove transformational.

With ongoing program success comes overwhelming demand and moving forward, this continues to pose a major organisational challenge. Collingwood Children's Farm finds itself with a finite amount of suitable voluntary work and limited ability to provide additional hands-on support. Whilst being mindful to respect and preserve existing relationships, the Farm must consider new and innovative program solutions so that the experience of being a part of Melbourne's community farm can be shared with more and more people, with a particular emphasis on engaging members of the community whom experience adversity.

The key program challenge facing Collingwood Children's Farm is this: How do we engage increasing numbers of Victorians, especially those facing adversity, with meaningful experiences without compromising our existing voluntary cohort or over-extending Farm resources? The answer is unlikely to be straightforward and will no doubt pose its own challenges.

A sustainable model of volunteering at CCF is likely to involve:

- A focus on fixed short-term structured placements
- An emphasis on schools and adult services developing their own farm-based programs and units of work





- Community partnerships, whereby the administrative burden of securing program funding is taken on by partner organisations

Despite some challenges, the 2018/19 year of volunteering at CCF has been overwhelmingly successful. On average, the program has engaged in excess of 140 participants on a monthly basis, consistently contributing two to three thousand hours of voluntary work per month. The program engages student groups from eight schools (including four special development schools and three community schools) as well as volunteer parties from seven adults support services and a significant number of community volunteers who attend CCF on an individual basis.

It seems almost unfair to mention highlights when the work of our entire voluntary cohort is so incredibly valued but several standout achievements must be acknowledged.

2019 sees our Pathways to Employment project reach its final stages. Initially planned to engage students attending Lynall Hall Community School with a vocational work experience program, the generous support of Inner North Community Foundation has allowed the program to expand greatly in scope and ambition. Students and participants from Lynall Hall Community School, Heatherwood School, Rosamond School Bulleen Heights School, Melbourne Montessori School, OC Connections and Alkira have worked tirelessly to retain and landscape one hundred meters of eroded sloped ground. Participants have developed a sense of self efficacy and community and should be extremely proud of their work. Collingwood Children's Farm is uniquely placed to offer these practical, hands-on community experiences and the results speak for themselves with excellent attendance, flawless conduct and an extremely high standard of work.

Special mention must also go to Tom and Ollie who have made great strides in improving the Farm's ability to offer an increasingly inclusive experience. Their stunning handmade all access tables and outdoor furniture will soon be rolled out across the property and will fundamentally improve the convenience and dignity with which wheelchair users access Collingwood Children's Farm. In conjunction with our soon to be operational bathroom hoist, CCF is pleased so see the property become increasing accessible for all community members.

AGCO Australia continue their incredibly generous support of Collingwood Children's Farm and its community programs with the imminent upgrade of our much loved Massey Ferguson 4600 series tractor. Having such reliable and capable machinery at our disposal is a real luxury and something that would not be realistic without such generous ongoing sponsorship. We'll certainly miss the big red beast but rest assured, its replacement is sure to bring even greater capacity to Farm operations and community programs!

Collingwood Children’s Farm recognises the need to modernise its communication strategies and continues to expand its digital presence.

A comprehensive website redevelopment is underway and will allow CCF to more effectively communicate with visitors and stakeholders. Communication channels between CCF and its valued members have been significantly upgraded; allowing more efficient and effective engagement with a most valued stakeholder group. Social media channels continue to perform well with sustained growth and an engaged, local audience.

40 years in, we’re determined to do more and more to support Victorians experiencing adversity. The need in the community is greater now than ever and Collingwood Children’s Farm must play its part.

Steve Costello
Community Engagement



Ode to the Water Mains



Many will look back, in the history of Collingwood Children's Farm, and think 2019 was the year the Farm turned 40, and the pinnacle of that year was the Farm's 40th Birthday.

But I would argue that you are wrong.

2019 was the year we finished replacing the water mains.

2019 was the year we had clear clean running water out of taps.

2019 was the last year lush grass would inexplicably grow in areas of an otherwise dusty paddock.

2019 is the last year that someone would mention on the radio at 10 to 5pm that there was a geyser in a back paddock, usually on a Friday night and usually before a market Saturday, a bonfire, or a Family day in September holidays.

2019 is the last year we will be digging holes in mud in unexpected places at weird hours trying to save a few bucks on the plumber. I know I speak for many, many people on the Farm when I rejoice in saying goodbye old mains and welcome to the new ones.

Let me tell you about the new mains (cos I'm sure you're on the edge of your seats with this...)

They're recycleable plastic. They're big. They have connectors that click together like a cylindrical Lego set, so you can extend, elongate, adapt, filter, stop, and divide pipes with the help of a team of 8 year olds (if you wanted).

WE KNOW WHERE THEY ARE!

WE HAVE A MAP!

When there is a leak, we can look at the map, work out what line it's on, and turn it off at the stop tap, (not the whole Farm, or a large percentage of it.)

I LOVE THE NEW WATER MAINS!

Now we just have to get on top of the tank water, and the windmill and the runoff ..!

Bridget Bainbridge

Operations Supervisor

Volunteering News

The Collingwood Children's Farm has been a place for people to come and experience fresh air and farm life.

Our work experience program is open for students in high school, tafe students and university students. The main areas that our students come from include Veterinary, Animal Studies, Horticulture, Education, Community and Work Education.

Over the year we have had students from all over Victoria, as far as Nhill College. Students from outer Melbourne come to the city to experience 'city life'. Completing their placement at the Children's farm provides a welcoming, comfortable place to work. They also teach us a few tricks from their own farms.

Looking after the daily running of the Farm is nonstop, and so we thank all the students that have helped us every day this year!

Thanks to Abigail from Hawkesdale School pictured below, who is having fun feeding our cow Finna.

We all know how good it feels to be outdoors! People that work in offices get to spend a day with their favourite not-for-profit organisations. We have had over 20 different corporate groups coming over the past year.

We are booking in 2-3 groups per week. The activities the groups are completing range from gardening, general maintenance, paddock maintenance and unloading hay. The farm jobs always seem to be the favourites as the groups get to spend some time with the animals too.

Thank you to all the groups that have helped and continue to help us. We wouldn't be able to keep up with all the work without you!

A happy snap from the team from Treasury Wine Estate. Thank you!

Anita Stec
Volunteer Coordinator



Sev's Spiel



The Farm is a wonderful community resource, and we want to make sure that everyone who wants to engage with the space has the opportunity. We have started sending representatives to local networking meetings such as *Onwards Collingwood* and the *Yarra Early Years Network*. Sending our staff offsite to meet with other local community organisations has opened doors to new partnership opportunities as well as the provision of free family and group tickets to people living in the local area.

In January we sent out a questionnaire asking our members and subscribers what workshops and activities they would like to see at the Farm. Through funding provided by the Bank of Melbourne we have rolled out the 'Dynamic Communities Grow' program which has been working to trial different activities and workshops such as *Help the Gardener*, *Native Plants*, *Let out the Chooks*, *Farm Craft* and more. These have been a great success and have given the ability for many of our young visitors to engage with new areas around the Farm whilst learning lots about its plants, animals and history. Katherine, one of our facilitators, has said that not only are the 'kids building motor, memory, counting, communication, sharing and team-work skills', the activities also give a 'great opportunity for parents to make social connections'.

As part of this program, we are working hard to develop partnerships with local organisations to further expand the CCF community providing further opportunities for engagement. *Chook Books* was run in partnership with *Kids Own Publishing* and local artist Ciara Denham. This has been a great addition to our monthly market. Inspiration from our 100+ new published young authors has been used to create a Farm book, *We went to the Collingwood Childrens Farm*, which we will see launched at our 40th Birthday Party!



Working with the CWA and the City of Yarra, the Farm has supported workshops open to the public which have had a focus on gardening in small spaces and preserving your excess garden foods. These workshops have been well attended and we look forward to developing more opportunities in the next year. In September we partnered with Cultivating Community to run *A Day at the Farm: Learning Outdoors*, a full day workshop for teachers to inspire them to engage in more outdoor learning in their schools. It was an engaging, hands-on workshop which included cooking lunch over an open fire.

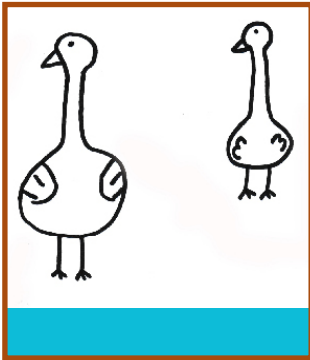
There have definitely been challenges in the last year and we are excited to take those lessons learnt to improve the way in which we facilitate time and promote new happenings at the Farm. We are excited to embed the new activities and continue to develop our workshops in-line with feedback from our community!

An exciting visit from Costa from Gardening Australia showcased some of the great programs we have introduced this year and we got to chat about the importance of being outdoors, in nature. We are firm believers in less screen time and more dirt time, gardening, animals cuddles, running in paddocks and building things with sticks. We look forward to seeing you all down here to engage in all the new activities, to get lost in the Farm, to discover new things and to tell us what else you'd like! We're all ears!!!

Sev Darwell
Community Liaison Coordinator



A year in the life of the animals & pastures of CCF...



June–August 2018

The goat and sheep breeder flocks are happily growing babies in their bellies while staying as warm and dry as possible (the goats in particular hate the rain and getting their feet wet). The non-breeder herds of sheep and goats are enjoying the winter and all the visiting schools and tours who come and feed them. The ducks and geese are relishing the extra rain and mud that make perfect puddles for dabbling in. Our cow Daphne has come back from her honeymoon and is hopefully pregnant.

The summer grass is dormant and hiding safely in the ground, waiting for the summer sun to come back, while the winter grass is well and truly taking over. Things are green, but slow growing as well as very wet and muddy. Some of the paddocks are enjoying a well-deserved break as the horses are all on holidays.



September–November 2018

The babies have arrived! We are the proud grandparents of 4 bouncy lambs and 5 beautiful doe-kids. We also had the surprise birth of 7 adorable little piglets. Maybelle hid her pregnancy very well! Mums and babies are doing well and all the animals on the Farm are enjoying the delicious spring growth that is coming through in the paddocks. All the spring rain and sun makes for great growing conditions. Our little bull calf went to his new home down in Gippsland and seven new guinea pigs were welcomed into the family here at CCF.



December – February 2019

It's the middle of summer and everything is slowing down and drying up to deal with the heat. The winter grass is hidden, waiting for the cold and rain, and even the summer grass is starting to lose its battle with the elements, so all the animals are eating hay instead of pasture to get through. The poultry are all finding any bit of shade they can to try to stay cool. The lambs and kids are all grown up and have been weaned from their mums. Some of them have even moved on to other homes and adventures. Our heifer, Poppy, has also moved to a new home down in Gippsland and is expecting a calf late next year. Our last clutch of chickens hatched. Numbers have been a little down this year, but they are all doing well.



March–June 2019

All our sheep and goats have been reunited, before 5 goats and 7 ewes are separated to be joined with our buck and ram. Our cow Daphne had a beautiful girl calf, called Juniper, in May. The pastures are still feeling a little sorry for themselves as they wait for the autumnal rain, although they are starting to look green again. There is minimal pasture growth however, so the animals are still relying on hay for most of their feed. As the winter grass starts coming through again the breeder sheep and goats are happily growing babies in their tummies and hiding from the rain.

Mia Sutherland, Farmer – *Animal Husbandry*

Gardener's Report

MERRI CREEK MANAGEMENT COMMITTEE PLANTING DAY

The two planting days we held on the river bank were a huge success! We had approximately 40 community volunteers come down to the river bank and help us plant over 800 indigenous plants. These plants will provide habitat and food for the local fauna and will hopefully flower and spread their seed ensuring succession of these species.

The Merri Creek Management Committee (MCMC) were wonderful to work with, providing everything we asked for and fantastic with all the volunteers. MCMC staff will continue to maintain sections of the river bank and come back in the summer to water the new plants.

By involving members of the community in this planting we are cultivating awareness of this important ecosystem as well as encouraging people to interact with each other and with the environment.

It was great to see so many parents, bring down their children, passionate about instilling environmental awareness from a young age - the kids were most excited about watering in the plants with the mini watering cans.

Thank you to everyone who helped facilitate this planting day, it's a win for the community and the environment.

FIRST NATIONS FOOD GARDEN

Visitors had a taste of the Farm's first native food harvest: herbs to spice up the Farm Cafe's wood-fired damper during NAIDOC week celebrations. Produce was harvested from the demonstration shelterbelt garden, a two year collaborative project with NARRAP, the land management team of Wurundjeri Woi wurrung Cultural Heritage Aboriginal Council.





Expanding on this are plans for a new First Nations Food Garden which will take a central position in the Farm's landscape. Visitors will learn about Indigenous culture through indigenous and native plants growing on the site, which will also feature a space for Wurundjeri council to hold smoking ceremonies and deliver education.

Funding for this project, generously donated by ANZ and The Bennelong Foundation, has allowed us to start stage one of this project. In May 2019 groundworks commenced with the site soil being excavated and a retaining wall constructed.

Melbourne University's Living Pavilion Project at Parkville donated a lot of indigenous plants endemic to the Yarra bend. The Farm held a propagation day with community volunteers to propagate many more plants from cuttings and seed whilst sharing knowledge and skills among staff and volunteers. Melbourne University's Burnley Campus donated potting mix, nursery facilities and space in glass house.

ORCHARD AND MARKET GARDEN

'Hey Dad, let me show you a carrot! Here!!! Here!!! Look, that's a carrot!' exclaimed the young boy with pride pointing at his discovery. In the orchard kids (and groups) are planting seeds with so much anticipation they're watering their own shoes with excitement. We are activating this space towards engaging a larger and broader audience and facilitating learning about food and plants whilst visiting the Farm. We're introducing new functional aspects including:

- Creating a place for groups and families to sit under the shaded blossoms of stone fruit, inviting people to feel comfortable, experience the beauty of the area and spend more time in the orchard.
- A new market garden is busy growing for customers to see and eat from through the monthly market and farm cafe. We're showcasing garden to plate in one place! Home-sized plots are also starting as living examples of what people could do at home.
- We've added animal interaction (chickens) in what was only a plant space and included native tubers and indigenous food plants amongst familiar annuals, as they're all food to interact and learn to grow!

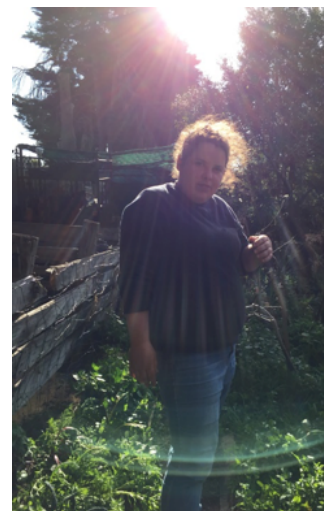
TUESDAY GARDENING GROUP

Tuesday afternoon we have a garden volunteer group that learn and perform some of the more skilled garden tasks. Though this group is open to occasional volunteers there has been a core group of dedicated regular members consisting of Kelvin Prior, Serap Arkin, Phyl Halpin, Cody Broxham, Ann Stevens, Helen Mc Donald, Jaqueline Hope, Anna, Kadee and recently Wendy. There is much more than just gardening to this group, for Serap 'my Tuesday Group is something that I always look forward to, it

has taught me so much, knowledge I have been able to put to use in my own garden'. Kelvin says 'I like to come to the gardening group because at the same time as I believe my volunteering is helping the community in a small way, it is intensely satisfying on a personal level, as it is such a peaceful and rich learning environment at the same time, you interact with like-minded people, exchange thoughts and ideas, the staff are knowledgeable and incredibly helpful and supportive on so many levels. It's great for my mind, mental and physical health to have the opportunity to contribute in this way at the CCF'. Whereas Jacqueline says she 'likes to come to gardening group for the following reasons: to learn about plants/horticulture from Toni; the physical nature of gardening and being outside; the team-interacting with lovely people/volunteers and staff; feeding and getting to know animals'.

The gardens team is excited to be working amongst a diverse group of people and plants to create a brilliant experience for everyone on the Farm.

Toni, Simeon, Daniel, Rachel, and Synti
The Gardening Team



Stephanie Kramer, Kelvin Prior, Cody Broxham



European Federation of City Farms



The Farm's international engagement continues to express itself in a multitude of ways. From the many languages spoken here daily by overseas visitors or newly-emigrated residents, foreign language schools and study delegation tours (most recently from the Vietnamese government), the Farm plays an important role on the global stage. We indeed are a local, State, National and worldwide asset!

However the current core of our international outreach continues to us being an Associate Member of the European Federation of City Farms (EFCF) - with its family of over 500 city farms across the European Union, the USA and of course Australia. Being part of a huge network of diverse city farms allows for us to peer review, network and benchmark our operations against worlds-best practice. For our staff, exposure to new ideas and concepts of what a city farm can be and offer has already resulted in fresh programs and events happening at the Farm - such as more artistic and creative activities being offered alongside our normal farm operations. There will be more to come!

At the end of the EFCF Annual Conference in September 2018, the CCF made a commitment to deepen our engagement with it, resulting for the first time in one of our staff attending the EFCF AGM (at Culleybackey, Northern Ireland) in April of this year. This was both for the purposes of observing the EFCF governance in action, but with the hopeful intention to create an International Representative member on the Board (as well as supporting a Youth Representative). The EFCF AGM consists of not only the practical elements of governance, but allows for delegates and observers to visit a variety of study locations and broaden their experience of city farms outside of their normal country of operation.

Site visits during the AGM were made to a social farm at Armoynagh, Community Garden and Nature Reserve (at Cloughmills) and Drumnaph Community Nature Reserve (at An Carn). While the social conditions stemming from The Troubles in Northern Ireland have no parallel in Australia, what impressed was the easily-recognisable use of agriculture and nature to build community, social resilience and food security - something done at the CCF daily!

Unfortunately the goal of creating an International Representative position (or Youth Representative) was not realised, but our EFCF Representative was nominated and accepted to sit on the Strategic Review committee (meeting via Skype). It is the aim that they attend as an observer the 2020 EFCF AGM in Belgium. However disappointing, after the AGM a planned visit to a variety of city farms and related peak-representatives bodies in the UK presented another great learning opportunity. Visits to the head offices of Rare Breeds Survival Trust and Linking Environment and Farming (LEAF) Education in Warwickshire proved invaluable and deeply insightful. And whilst working with Rare Breeds is something the CCF has a great appreciation of, LEAF Education is an agricultural educational and engagement body without parallel in Australia. Funded by a levy on sales of agricultural produce, LEAF Education is tasked

with engaging, educating and connecting farmers and consumers throughout the UK. One hugely successful example of their work is 'Open Farm Sunday', held annually in June. Now in its fifth consecutive running, this June saw over 250,000 people visit 365 different farm sites across the UK - amazing!

Other city farms visited were in Scotland (Gorgie Street City Farm, Edinburgh - actually the only city farm in Scotland!), and Cyrenians Farm (Kirknewton). In England, Surrey Docks City Farm and Mudchute (both in London) provided the opportunity to see the great pride taken in farming Rare Breed animals for show judging as well as consumption. It's our hope that having continued to develop our overseas connections with other city farms through on-site visits that we can not only learn from their operations, but one day form staff exchanges to the benefit of everyone involved. Towards achieving that end, a big thanks goes to all the city farm managers and staff who generously made our CCF Representative so welcome.

In summary, given the continued current unstable state of the world with regards to issues such as political extremism, nationalism, mass displacement and conflict, surely we need a future where our strength is better reflected in common humanity and purposeful goals creating outcomes to sustainably support our irreplaceable planet. Looming challenges such as global warming, water shortages and food crises will either force this (with the negative outcome of grasping for extreme solutions); or there is the opportunity to create strong worldwide connections that will have positive ongoing local, national and international consequences. Being an active member of a strong global family of city farms still continues to provide the CCF with just that opportunity.

Andrew Phillips



Resources/Organisations visited:

<https://www.rbst.org.uk/>

<https://education.leafuk.org/>

<https://www.gorgiecityfarm.org.uk/>

<https://cyrenians.scot/community-and-food/good-food/farm/>

<https://www.surreydocksfarm.org.uk/>

<https://www.mudchute.org/>

<https://farmsunday.org/>

Young Farmers Program

Another busy year for our wonderful Young Farmer volunteers:

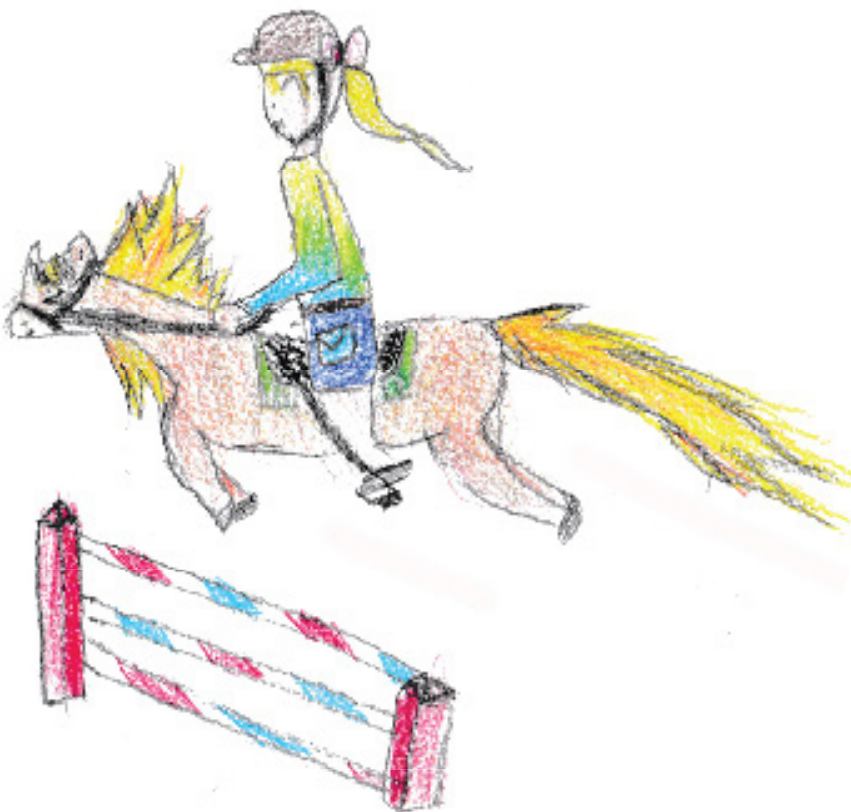
Fixing fences in preparation for the sneaky lambs and goat kids, particularly the latter who will find the teeniest, tiniest hole to escape through and drive their mums crazy gambolling all over the Farm (if you spoke goat you'd be pretty sure they are yelling out 'wheee, you can't catch me ha ha ha'). So far, the YFP are winning :)

Making box animals for little visitors to the bonfire to put on and wear (also seen on a few older visitors on the night, so obviously a big hit). The staff in charge of this workshop have made a big note for next year that YFP and paint = messy, messy, messy. #don't wear your favorite jeans.

Plans underway for a YFP blog so you can follow what the kids are up to and their thoughts on all things farm (plus life, the universe, and everything)

Lots of nettle pulling which equals yummy nettle soup and nettle pasta. As soon as the blog is up they'll put the recipes on there so everyone can enjoy, plus keep your eyes peeled for future recipes from the indigenous food garden harvest. Very excited about working with the new horticulture team on this project.

Susan Pitman
Weekend Supervisor



Horses and RDA

The Young Farmers have been learning to catch, release and lead horses, how to safely move around them, tie quick release knots and other skills on the ground. As for riding, we have been on trail rides around the Farm, some learning rising trot while others have been learning to canter (at a controlled pace!)

We have changed the process for Family Day pony rides so they are now a ticketed event. This has meant that wait times have been reduced and it's now much less stressful for all involved (horses, staff, parents and children!).

Sadly we lost Tyson to Cushings disease in June last year... He was a sweet and trustworthy pony who had been a fixture on the Farm for many years. He will be missed by all who got to spend time with him.

On a happier note, we welcomed Becky to the Farm in September. She is a small chestnut welsh pony who has proved great for the more nervous Young Farmer and holiday program kids to handle. She is very friendly and the perfect size for smaller children. She has also proved to be an asset for the RDA program.

RDA continues to run smoothly three days a week (during school terms 1,2 and 4). They have been able to work through their waiting list and have a number of new riders attending. This year they changed the location for the Christmas party from the barn to the back of the stables. There was live music, carol singing and a tasty barbecue. It was a huge success and great opportunity for all the families and volunteers involved to get together and have a good time.

Finally Jess Liston came to give a demonstration of Equine Facilitated Learning and run a workshop for staff. Feedback was mostly very positive with a few ideas on how it could fit in at the Farm. It is something possibly for the future we hope to be able to offer and implement (in a way that fits in with the Farm values).

Michelle Jessop
Horse Coordinator



Events

Events at the Farm cover a broad variety of activities; from those supporting the work we do providing for those disadvantaged in our community, or in alignment with our aims and objectives (as well as those paying events that help support the former). Just a few examples of those are: NAIDOC Day, Kids Teaching Kids. Barn Yarns (with the Collingwood CWA) and Childrens Week City of Yarra Picnic Day.

Each year our Winter Solstice Bonfire is a roaring success and this year was no exception. Selling out in record time, the 3500 strong crowd was entertained by music from CHOPS, lanterns by Annie Edney and friends, storytelling with Farmer Floyd, shadow puppetry with Yarra's Youth Group, box-costumes made by the Young Farmers and delicious food and beverages: beers kindly donated by Mountain Goat, wines heavily discounted by Noisy Ritual.

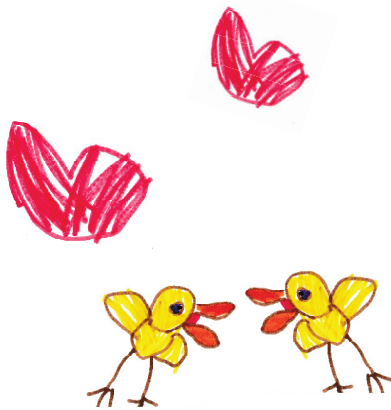
Romance-wise, the Farm has continued to grow into one of Melbourne's most popular locations for boutique and small weddings – last season saw over 70 ceremonies and receptions take place. To all our couples we wish you a happy and joyous life together. For corporate staff, several companies also provided Family Fun Days at the Farm for they and their children to enjoy. We have also extended our daily activities for visitors with 'Weed and Feed', 'Arts and Crafts' and 'Storytime' as well as increasing feedwalks on weekends. And for those with a love of music/good food (and a responsible beer), we again hosted the 'Cans and Bands' event (this year with local acts Parsnip and Cable Ties).

And of course this year will see the largest event in the Farm's history take place – our 40th! A huge party will take place on Sunday November 3rd with a 'Producers Paddock', entertainers, lots of activities as well as a variety of quality musical acts. A great way to celebrate 40 years of the Farm working to address disadvantage in our local community!

And for all our visitors who may occasionally experience a little 'crossover' from the Farm transitioning to an event location or disruption from an ongoing one, we appreciate your patience and understanding for the benefit that these activities bring.

Check out this well-dressed bunch of farmers! And why exactly are we pointing out our sharp farm fashionistas? Regular visitors may have noticed a change in the look of our staff recently, and it's all due to the generosity of RB Sellars, an Australian owned and operated clothing company that's been dressing farmers since 1996. They're also manufacturers of Drizabone oilskin protective workwear, famous across Australia. We're very thankful their support in choosing to fit our staff in their well-known Burton workshirt. So if you need to locate one of our farmers during your visit, look for the blue shirt.

Andrew Phillips
Events Coordinator

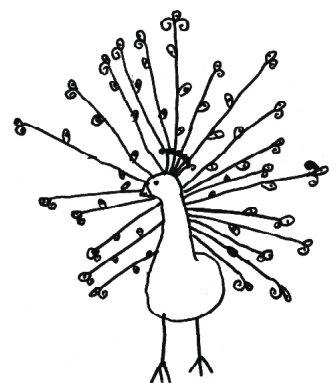


The Community Gardens

The Community Gardens are enjoying a major reinvigoration thanks to the vision and energy of the Working Group, consisting of seven plotters and led by Committee of Management member, Kieran Dickson. This group has been meeting every month to discuss a range of issues, both short-term and strategic, after a number of themes were identified at the end of 2018 as the basis for future development. These included the safety of the gardens, decision-making processes, community building and productivity. An open meeting was held in March 2019 to discuss proposals to introduce different forms of gardening at the plots, from smaller plots, shared plots and communal gardening. A handbook has been compiled to introduce newcomers to the gardens.

The participation of community groups has been consolidated by the continued involvement of the Collingwood chapter of the Country Women's Association as well as Heatherwood School, who have now maintained plots for over two years. In addition, gardener Peter Barber has developed the 'Plot to Plate' project which grows produce for the Farm Cafe with proceeds supporting the work of 'Playing our Part' which offers gardening activities to individuals from diverse backgrounds with little experience in growing food. Peter's volunteers also constructed a table and benches under the shade trees at the southern boundary of the plot which has been enjoyed by many gardeners at the end of monthly working bees.

Toni Phillips and Jennifer Bowen
Community Gardens Working Group



Friends of the Farm



THE FARM CAFE

The Farm Café provides an important service and drawcard for Farm visitors. The café owners are committed to serving local, ethically and sustainably produced food and in response to feedback have re-worked the Farm-side kiosk menu to offer a more affordable price point without compromising quality. As part of ongoing efforts to reduce waste, take away coffee cups have been phased out on the Farm saving kilos of waste from entering landfill.

Farm weddings continue to be a popular choice with The Farm Café producing 53 weddings in the barn, 7 in the Stables Paddock and 17 in the café for the 2019 financial year. Weddings deliver important revenue to the farm. Through good cooperation between the farm and the cafe the staging of these weddings continues to be streamlined to minimise the impact on the farm. Feedback from couples and guests has been glowing, with many people discovering the charms of the Children's Farm for the first time.

MELBOURNE FARMERS MARKET

Collingwood Children's Farm Farmers Market notches up its 17th year in October 2019 and remains one of Victoria's best loved accredited farmers markets. Every month we gather together with over 60 farmers and small-scale food producers who sell direct to their customers and connect urban communities with regional Victoria. It's a great reinforcement of the CCF motto of 'a country life for city folks'.

The environment for the independent family farming community is increasingly more challenging with enormous competition from large-scale operations, an aging population with few succession incentives, urban creep taking over farm land on Melbourne's foodbowl surrounds and the mainstream commercial marketing of cheap food. Our farmers market provides an opportunity for people to understand these issues, all part of the climate change emergency discussion, and a rare chance to know where our food really comes from.

Miranda Sharp

Founder, Melbourne Farmers Markets and Collingwood Children's Farm Farmers Market.





'PLAYING OUR PART' AT THE FARM

As a small association we are privileged to have access to the wonderful resources of the Farm and the Community Gardens. Over the past year we have had the Farm's support to run the 'Plot to Plate' project which raised close to \$1,000 in collaboration with the Farm Cafe and Farm reception staff have been instrumental in promoting and selling 100+ copies of *Recipes for Disaster* from its launch in December last year.

'Playing Our Part' volunteers in the gardens have established a regular Sunday community gardening program which shares what it produces along with developing gardening knowledge and expertise and growing relationships.

Collaboration in the gardens has led to several creative projects including the CCF song *At the Farm* and accompanying video produced by one of our gardeners and several gardening songs and a poem inspired by the location which will become future fundraising activities for the Farm and 'Playing Our Part'.

Everyone involved with us acknowledges the generosity of spirit and cooperation which makes it a joy to spend time at the Farm. Thank you.

Peter Barber

Founder, *Playing Our Part Incorporated*

THE HANDWEAVERS AND SPINNERS GUILD

The *Handweavers and Spinners Guild of Victoria* attended their first 'Yarn in the Barn' in May 2003 during the winter months on the Farmer's Market Day.

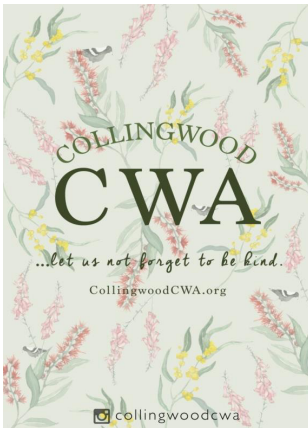
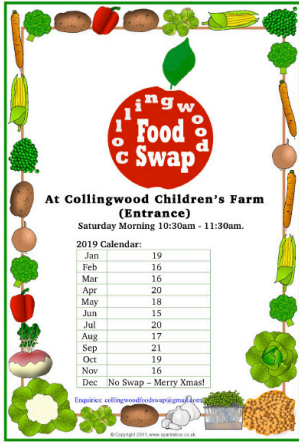
We have increased our attendance this year and have no trouble in attracting our members to volunteer for the day. They love demonstrating their skills and talking to the all the interested families. It is great to see the children take an interest in our crafts and want to try them. I think our members get as much pleasure showing the children how to spin or weave as they get from trying the craft. We hope these children will be some of the next generation to pass these skills onto others in future.

All our knitted garments are made from hand spun fibre, we also sell the handspun fibre for others to use in their crafts at home. We have many attendees at the market who have become our regular clients as they appreciate the items our members make. We sell a vast array of hand knitted, crocheted, woven and felted items, including socks, mittens, hats, children's clothing, scarves, shawls etc, it is a great place to purchase quality hand made Australian products. Our Guild Rooms are at 655 Nicholson Street, Carlton North where we sell the same items from Tuesday to Saturday during the week.

This year we also attended the book launch of *Jumbuck's Adventures* taking along our spinning and weaving equipment for children to have a go, we had great interest from some of the children who tried both weaving and spinning.

We look forward to our continued involvement with the Collingwood Children's Farm over the coming years and hope to continue to interest children in our crafts.





COUNTRY WOMEN'S ASSOCIATION

The Collingwood Country Women's Association (CWA) has been delighted to partner with the Collingwood Children's Farm this year on several successful collaborations. We worked together to initiate a series of 'Barn Yarns' - community events held on winter Sunday afternoons by the fire in the Barn. These popular events feature an informal talk or workshop on topical issues over a delicious home-baked afternoon tea. The sessions have included 'Consume Cake not Clothes' on sustainable fashion, and a session on 'Sharing our Surplus' which resulted in the establishment of our successful monthly 'Collingwood Food Swap'.

The Collingwood CWA shares the vision and values of the Farm, and we love participating in their community activities such as the annual *Winter Solstice Bonfire*. We baked and sold hundreds of cupcakes and chocolate crackles for the families who attended, and raised funds for local charities. We also have a plot in the Farm's community garden which has helped connect us to our neighbours and other local organisations. For example, one of the other community gardeners, 'Playing Our Part', is an organisation working to help alleviate homelessness in Melbourne. After connecting in the garden, our CWA members now produce hand-made welcome kits for vulnerable people settling into stable housing.

Another productive collaboration was the handling of the Farm's surplus crop of Seville oranges and tangelos. We were happy to collect several barrowloads of the bitter oranges and turn them into jointly-labelled marmalade and fruit syrup for the Farm's 40th birthday celebrations. We expect this strong local partnership to continue to grow in the future.

Collingwood CWA

COLLINGWOOD CHILDREN'S FARM APIARY



The Collingwood Children's Farm's Apiary is located next to the Main Yarra Trail near the northern boundary of the Farm. The apiary consists of ten main hives of various designs, an educational display caravan, an equipment shed, and a surrounding garden of bee-friendly plants.

It is jointly managed by the Farm and the Melbourne section of the Victorian Apiarists' Association Inc according to a mutually agreed 'Memorandum of Understanding'. The apiary's operations and management supports the Farm's Vision, Priority Directions and Key Strategic Initiatives.

1. The main purpose of the apiary is to educate and inform people about bees and beekeeping and the importance of bees for food security. Throughout the year this has been achieved in a number of ways.



- During school weeks, the educational caravan was visited by groups of school children under the direction of the Farm’s staff, principally as part of its *Paddock to Plate* program.
 - On twenty-three Sundays throughout the year, the Farm’s volunteer beekeepers opened the apiary to the general public. This allowed them to inspect the educational caravan and the bee garden, and to don beekeeping suits to open and inspect hives under the direct supervision of the Farm’s volunteer beekeepers.
 - On ten days throughout the year, the apiary was used by beekeepers from VAA Melbourne Section to formally train beekeepers as part of beekeeping courses and workshops. Two of the Farm’s staff attended one of these courses.
 - In February, the apiary was used by Victorian apiary officers, to deliver a bee biosecurity training program to representatives from Victorian beekeeping clubs.
 - During February and March the apiary was used to instruct students at the adjacent Sophia Mundi School about basic beekeeping practices as part of their ‘Inspired Learning’ program.
 - Recently, members of the Farm’s Young Farmers’ Program, have attended the apiary to receive instruction in basic beekeeping practices.
 - In August, members of another beekeeping group visited the apiary to learn how best to establish a similar facility in their community.
 - The apiary and its beekeepers have assisted in the production of a children’s book about beekeeping, a Chinese television program about the Australian apicultural industry, the recording of an ABC radio program about varroa, and the recording of a movie by the Queen Bee Foundation about the pollination industry.
 - In order to improve disability access to the apiary and to better enable its educational objectives to be achieved, the apiary beekeepers have been collaborating with the Farm management and other stakeholders to develop a Master Plan for the apiary. This has been supported by a substantial pro bono contribution from *Architects Without Frontiers*.
2. The apiary continues to support the Farm’s farming and horticultural operations by its bees pollinating its pastures, orchards and community gardens.
3. The apiary continues to support Victorian and Australian governments biosecurity programs by regularly testing its bees for the presence of varroa, an exotic bee pest which, if it arrived in Australia, would have a severe impact on agricultural and horticultural industries.



Barry Cooper

Email: collingwoodbees@gmail.com

Facebook: www.facebook.com/collingwoodbees



Patrick Beggs - the Podcast

SUMMARY OF THE PODCAST INTERVIEWS

The Collingwood Children's Farm 'Shared Histories' podcast project is funded by the Public Records Office of Victoria. It has been a massive privilege to be a part of. To get a sense of the interview process I think it's best to explain the components within the project. One of the major components of the project is to archive the collection of oral histories that have been shared. Getting to listen to and document over 50 different individual's relationships with the Farm has been a massive honour and no easy feat.

The second element has been to create a three part podcast series celebrating the history of place, including the Wurundjeri and Good Shepard perspective into the Podcast. This element will strengthen the narrative between all three perspectives that have cared and continue to care for the land.

A third component of the project has been community engagement. Designed to re-engage some of the community who helped make the farm what it is today and who have lost touch with the farm for whatever reason. By having an external body/person responsible for collecting the stories it has created a safe place for people to share their stories about the Farm.



The process in stages:

- 1: Identify who the CCF community encompasses.
- 2: Make contact with key community members and begin to form relationships.
- 3: Research the backstory on the farm, identify key interest points.
- 4: Write treatment for podcast and seek approval from management.
- 5: Communicate the projects aims and broadcast across community channels to make process as transparent and inclusive as possible.
- 6: Write question sheets, conduct more research pre interviews
- 7: Coordinate interview days with a wide range of community members, aiming to represent all interest groups.
- 8: Record and conduct the interviews, making sure to communicate again what the scope of the project is to the interviewee and what the interview would be used for.
- 9: Process the interviews.
- 10: Catalogue and store interviews.
- 11: Treat and transcribe interview ready to be made archived and made public.
- 12: Write a more detailed script for podcast series incorporating the interviews
- 13: Edit the 3 part podcast series according to the agreed upon treatment
- 14: Apply the over arching narration.
- 15: Mix and master the podcast, applying sound design and effects.
- 16: Submit to management and all relevant stakeholder bodies for approval/ edits.
- 17: Address edits and suggestions.
- 18: Write treatment and script for promo 1 minute video.
- 19: Submit to management for approval.
- 20: Shoot video.
- 21: Edit and apply highlight reel from podcast series.
- 22: Submit for edits to management and relevant stakeholder bodies.
- 23: Deliver the project in its entirety.

Some interviews required more time and research than others due to the Podcast and community engagement components. Many more days and interviews resulted due to the meaning behind the project than were initially thought or calculated for. The process used to gain access to some of the interviewees has been one of persistence, patience and divine timing.

Thank you to all you have been apart of it.

Patrick Beggs
Director, *Pur Productions*



THANK EWES SO MUCH

The background of the page is filled with a repeating pattern of stylized sheep. Each sheep is drawn with simple outlines, showing its head, ears, and legs, with a large, fluffy cloud-like shape representing its wool. The sheep are scattered across the page, some larger than others, creating a light and cheerful atmosphere.

**Kids Own Publishing
Farmer Incubator
Melbourne Water
Adam Bandt
ANZ Staff Foundation
Bennelong Foundation
CWA
City Of Yarra
AGCO -Tractor
Melbourne Farmers Market
Farm Café
Wurundjeri Cultural Heritage
Aboriginal Corporation
Ciara Denham
Playing Our Partk
Peter Barber
Bank of Melbourne
Peter Pryor
Victorian Apiarist Association
Gardening Australia
PUR Productions
Timbecon
Five Ways Motors
Outlast Timber
Inner North Community
Foundation
RB Sellars
Corporate volunteer groups!
KPMG
NAB
VIVA ENERGY
REA GROUP
JLL in partnership with Telstra
Property
Abbotsford Convent**

**Telco Together Foundation - Axicom
Aesop
Public Transport Victoria
ANZ
Melbourne University
VMWARE
Sisters of the Good Sheperd
Experian
RMIT
Seek
Equity Trustees
Country Road
Treasury Wine Estate
AGL
Westpac
Linfox
Melbourne Water
Pfizer
Holden
Telstra
Champion Data
O.C. Tanner | accumulate
Farmaforce
Wells Fargo Commercial
Distribution Finance
Spunk
Accenture
Deloitte Tax Services Pty Ltd
Vodafone
Produce and Pet Supplies
Yarrambat and North
Warrandyte Vet Clinics,
Alphington and Fairfield Vet
313 Vets Hawthorn**

**With a special mention to our
dedicated volunteers;**

**Deb
Anastasia
Annika
Ben
David
Christian
Connie
Danielle
Dean
Graham
Hendricke
Jen
Mahali
Meghan
Olivia
Samantha
Thomas
Stephen**

**Alkira
Bayley House
Bulleen Heights
Burke & Beyond
Collingwood Alternative School
Heatherwood School
Hume Valley School
Kensington College
Lynall Hall
Milparinka
Montessori School
OC Connections
ONEMDA
Yooralla**

We are sorry if your name is not there as we so appreciate all of your support, thanks.

THIS PAGE IS INTENTIONALLY BLANK

COLLINGWOOD CHILDREN'S FARM INCORPORATED
A.B.N. 41 355 818 979

FINANCIAL STATEMENTS
YEAR ENDED 30TH JUNE 2019

LINDSAY ILES & CO.
CHARTERED ACCOUNTANTS
LEVEL 2, 105 QUEEN STREET
MELBOURNE VIC 3000

COLLINGWOOD CHILDREN'S FARM INCORPORATED
A.B.N. 41 355 818 979

INDEX

| | <u>Page No.</u> |
|---|-----------------|
| Income and Expenditure Statement | 3 - 4 |
| Statement of Comprehensive Income | 5 |
| Statement of Changes in Equity | 6 |
| Statement of Financial Position | 7 |
| Statement of Cash Flows | 8 |
| Notes to and forming part of the financial statements | 9 – 25 |
| Statement by Management Committee | 26 |
| Independent Audit Report | 27 - 29 |

COLLINGWOOD CHILDREN'S FARM INCORPORATED**A.B.N. 41 355 818 979****INCOME AND EXPENDITURE STATEMENT****FOR THE YEAR ENDED 30TH JUNE 2019**

| | Note | 2019 \$ | 2018 \$ |
|-------------------------------------|-------|------------------|------------------|
| Revenue | | | |
| Grants - Local Government | | 64,960 | 64,000 |
| - State Government | | 123,378 | 112,269 |
| - Other – special project | | 75,208 | 10,220 |
| - Car park revenue | | 162,483 | 157,561 |
| Donations - General | | 16,366 | 1,236 |
| Interest Income | | 9,677 | 24,122 |
| Investment Income | | 12,580 | 7,007 |
| Proceeds from Sale of - Livestock | | 1,674 | 610 |
| - Produce | | 1,804 | 8,013 |
| - Merchandise | | 7,306 | 5,508 |
| Garden Plot Hire | | 2,950 | 4,427 |
| Bookings & Farm tours | | 339,859 | 302,265 |
| Entry Fees | | 655,981 | 584,460 |
| Farm Passes & Membership Fees | | 63,554 | 42,396 |
| Fundraising Income – Farm Events | | 31,653 | 17,328 |
| Rental Income | | 136,460 | 149,611 |
| General - including wage subsidies | | <u>26,564</u> | <u>14,895</u> |
| | | <u>1,732,457</u> | <u>1,505,928</u> |
| Expenditure | | | |
| Advertising/Publicity | | 7,423 | 3,342 |
| Animal - Equipment Replacements | | 3,321 | 5,606 |
| - Feed & consumables | | 64,004 | 64,987 |
| Auditor's Remuneration | | | |
| - Audit Fees | | 7,200 | 6,800 |
| - Other Services | | 1,600 | 2,300 |
| Administration Expenses | | 48,587 | 18,846 |
| Bank Charges | | 7,310 | 5,763 |
| Book-keeping | | 26,421 | 6,682 |
| Business Development Costs | | 28,978 | 40,565 |
| Computer Expenses | | 3,368 | 9,320 |
| Depreciation - Buildings & Shelters | 1(b) | 68,715 | 67,816 |
| - Tools & Equipment | 1(b) | 4,245 | 9,837 |
| - Office Equipment | 1(b) | 2,419 | 322 |
| - Fencing | 1 (b) | 1,426 | 10,155 |
| - Farm Development | 1 (b) | 1 | 18,906 |
| Donations | | 3,600 | 3,600 |

The accompanying notes form part of these financial statements.
This report should be read in conjunction with the attached Audit Report of
David L. Ackland dated 25th September 2019

COLLINGWOOD CHILDREN'S FARM INCORPORATED
A.B.N. 41 355 818 979

INCOME AND EXPENDITURE STATEMENT
FOR THE YEAR ENDED 30TH JUNE 2019

| Expenditure (cont'd) | Note | 2019 \$ | 2018 \$ |
|--|------|------------|------------|
| Electricity & Gas | | 12,096 | 15,476 |
| Fundraising expenses | | 30,494 | 22,508 |
| Garden & Orchard Supplies | | 8,752 | 2,838 |
| Insurance - Workcover | | 9,852 | 14,064 |
| - General | | 11,866 | 12,197 |
| Motor vehicle & Travelling Expenses | | 5,725 | 4,591 |
| Merchandise | | 21,293 | 10,595 |
| O H & S | | 4,514 | 14,250 |
| Rates - Water | | 13,109 | 13,901 |
| Repairs & Maintenance | | 86,590 | 66,800 |
| Rubbish & Recycling | | 16,328 | 7,042 |
| Revaluation of Livestock | | (5,510) | 15,718 |
| Security Costs | | 3,207 | 5,759 |
| Staff Training & Welfare | | 5,522 | 13,252 |
| Staff Recruitment | | 7,468 | 6,003 |
| Sundry Farm Expenses | | 29,407 | 21,159 |
| Superannuation (Award) | | 96,063 | 86,250 |
| Telephone | | 15,769 | 14,909 |
| Veterinary Supplies | | 13,961 | 19,019 |
| Wages & Casual Staffing | | 1,054,742 | 779,336 |
| Provision for Employee Entitlements | 1(i) | 11,010 | 32,354 |
| | | <hr/> | <hr/> |
| | | 1,730,876 | 1,452,868 |
| | | <hr/> | <hr/> |
| <i>Net Surplus/(Loss) for the Year from Ordinary Activities</i> | 2 | 1,581 | 53,060 |
| | | <hr/> | <hr/> |
| <i>Total Changes in Equity of the Association</i> | | 1,581 | 53,060 |
| | | <hr/> | <hr/> |

The accompanying notes form part of these financial statements.
This report should be read in conjunction with the attached Audit
Report of David L. Ackland dated 25th September 2019

COLLINGWOOD CHILDREN'S FARM INCORPORATED
A.B.N. 41 355 818 979
STATEMENT OF COMPREHENSIVE INCOME FOR THE YEAR ENDED
30TH JUNE 2019

| | 2019 | 2018 |
|--|--------------|---------------|
| Revenue | 1,732,457 | 1,505,928 |
| Less: | | |
| Employee benefits expense | 1,247,868 | 865,586 |
| Depreciation and amortization expense | 76,806 | 107,036 |
| Advertising and promotion expense | 7,423 | 3,342 |
| Business development costs | 28,978 | 40,565 |
| Sundry expenses | 369,801 | 436,339 |
| | <hr/> | <hr/> |
| Current year surplus before income tax | 1,581 | 53,060 |
| Income Tax expense | - | - |
| | <hr/> | <hr/> |
| Net current year surplus | 1,581 | 53,060 |
| | <hr/> | <hr/> |
| Other comprehensive income after income tax | | |
| Net gain on remeasurement of investments in listed shares available for sale | - | - |
| | <hr/> | <hr/> |
| Other comprehensive income for the year, net of tax | 1,581 | 53,060 |
| | <hr/> | <hr/> |
| Total comprehensive income for the year | 1,581 | 53,060 |
| | <hr/> | <hr/> |
| Total comprehensive income attributable to members of the entity | 1,581 | 53,060 |
| | ===== | ===== |

The accompanying notes form part of these financial statements
This report should be read in conjunction with the attached Audit
Report of David L. Ackland dated 25th September 2019

COLLINGWOOD CHILDREN'S FARM INCORPORATED
A.B.N. 41 355 818 979

STATEMENT OF CHANGES IN EQUITY
FOR THE YEAR ENDED
30TH JUNE 2019

| | Retained Earnings \$ | Capital Profits \$ | Capital Grants \$ | Total \$ |
|--|----------------------------|--------------------------|-------------------------|------------------|
| COMPREHENSIVE INCOME | | | | |
| Balance at 1st July 2017 | 1,364,019 | 44,027 | 214,796 | 1,622,842 |
| Profit attributable to the entity | 53,060 | - | - | 53,060 |
| Revaluation increment | - | - | - | - |
| | ----- | ----- | ----- | ----- |
| COMPREHENSIVE INCOME | | | | |
| Balance at 30th June 2018 | 1,417,079 | 44,027 | 214,796 | 1,675,902 |
| (Loss)/Profit attributable to the entity | 1,581 | - | - | 1,581 |
| Revaluation decrement – financial assets | (15,944) | - | - | (15,944) |
| | ----- | ----- | ----- | ----- |
| Balance at 30th June 2019 | 1,402,716 | 44,027 | 214,796 | 1,661,539 |
| | ===== | ===== | ===== | ===== |

The accompanying notes form part of these financial statements
This report should be read in conjunction with the attached Audit
Report of David L. Ackland dated 25th September 2019

COLLINGWOOD CHILDREN'S FARM INCORPORATED
A.B.N. 41 355 818 979

STATEMENT OF FINANCIAL POSITION
AS AT 30TH JUNE 2019

| | Note | 2019 \$ | 2018 \$ |
|---------------------------------------|------|------------------|------------------|
| <u>ASSETS</u> | | | |
| Current Assets | | | |
| Cash and Cash Equivalents | 5 | 1,211,363 | 1,220,133 |
| Livestock On Hand | 6 | 35,410 | 29,900 |
| Accounts Receivable and Other Debtors | 7 | 65,860 | 13,970 |
| Total Current Assets | | <u>1,312,633</u> | <u>1,264,003</u> |
| Non-Current Assets | | | |
| Financial Assets | 8 | 111,349 | 108,987 |
| Property, Plant and Equipment | 9 | 507,851 | 553,761 |
| Total Non-Current Assets | | <u>619,200</u> | <u>662,748</u> |
| Total Assets | | <u>1,931,833</u> | <u>1,926,751</u> |
| Current Liabilities | | | |
| Accounts Payable & Other Payables | 10 | 68,720 | 82,461 |
| Grants Received in Advance | 10 | 22,176 | - |
| Employee Entitlements | 10 | 115,962 | 84,369 |
| | | <u>206,858</u> | <u>166,830</u> |
| Non-Current Liabilities | | | |
| Employee Entitlements | | 63,436 | 84,019 |
| Total Liabilities | 10 | <u>270,294</u> | <u>250,849</u> |
| Net Assets | | <u>1,661,539</u> | <u>1,675,902</u> |
| Equity | | | |
| Capital Grants & Donations | 11 | 214,796 | 214,796 |
| Capital Profits Reserve | 12 | 44,027 | 44,027 |
| Retained Earnings | 13 | 1,402,716 | 1,417,079 |
| | | <u>1,661,539</u> | <u>1,675,902</u> |

The accompanying notes form part of these financial statements.
This report should be read in conjunction with the attached Audit
Report of David L. Ackland dated 25th September 2019

COLLINGWOOD CHILDREN'S FARM INCORPORATED
A.B.N. 41 355 818 979

STATEMENT OF CASH FLOWS
FOR THE YEAR ENDED 30TH JUNE 2019

| | Note | 2019 | 2018 |
|---|------|-------------|-------------|
| | | \$ | \$ |
| Cash Flow from Operating Activities | | | |
| Entry Fees | | 718,478 | 583,728 |
| Grants Received | | 265,722 | 186,489 |
| Car Park revenue | | 162,483 | 157,561 |
| Donations Received | | 16,366 | 1,236 |
| Other Operating Receipts | | 364,820 | 386,953 |
| Payments to Suppliers & Employees | | (1,668,386) | (1,304,638) |
| Interest & Investment Income Received | | 22,257 | 31,129 |
| Rental Income | | 140,386 | 154,864 |
| <i>Net cash provided by/(used in) Operating Activities</i> | 3 | 22,126 | 197,322 |
| Cash Flow from Investing Activities | | | |
| Purchase of Fixed Assets | | (30,896) | (38,851) |
| <i>Net cash provided by/(used in) Investing Activities</i> | | (30,896) | (38,851) |
| Net Increase/(Decrease) in Cash held | | (8,770) | 158,471 |
| Cash & Cash Equivalent at 30 th June, 2018 | | 1,220,133 | 1,061,662 |
| Cash & Cash Equivalent at 30 th June, 2019 | | 1,211,363 | 1,220,133 |
| <i>Reconciliation of Cash</i> | | | |

For the purpose of this Statement of Cash Flows, cash includes:

Cash on Hand and in at call deposits with banks,
financial institutions, net of bank overdrafts.

Cash at the end of the year is shown in the Statement of Financial Position

as:

| | | |
|-----------------|-----------|-----------|
| Cash on Hand | 900 | 1,100 |
| Cash at Bank | 294,089 | 317,390 |
| Cash on Deposit | 916,374 | 901,643 |
| | 1,211,363 | 1,220,133 |

The accompanying notes form part of these financial statements.

This report should be read in conjunction with the attached Audit Report of David L. Ackland dated 25th September 2019

COLLINGWOOD CHILDREN'S FARM INCORPORATED
A.B.N. 41 355 818 979

NOTES TO AND FORMING PART OF THE FINANCIAL STATEMENTS
FOR THE YEAR ENDED 30TH JUNE 2019

The financial statements cover the Collingwood Children's Farm Incorporated and is an Association incorporated in Victoria under the Associations Incorporation Reform Act 2012. The Financial Statements were authorized for issue on 25th September 2019 by the Management Committee.

Note 1 : Statement of Significant Accounting Policies

These financial statements are special purpose financial statements that have been prepared in accordance with Australian Accounting Standards, Australian Accounting Interpretations and Australian Accounting Standards set out accounting policies that the AASB has concluded would result in financial statements containing relevant and reliable information about transactions, events and conditions to which they apply the requirements of the Associations Incorporation Reform Act 2012. The financial statements except for the Cash Flow information have been prepared on an accruals basis and are based on historical costs and does not take into account changing money values or, except where stated, current valuations of non-current assets. Cost is based on the fair values of the consideration given in exchange for assets. The amounts presented in the Financial Accounts have been rounded to the nearest dollar.

The following is a summary of the significant accounting policies adopted by the Farm in the preparation of the financial report. The accounting policies have been consistently applied unless otherwise stated. The Financial Statements were authorized for issue on 25th September 2019 by the members of the committee.

(a) Use of Estimates and Judgments

The preparation of financial statements requires management to make judgments, estimates and assumptions that affect the application of accounting policies and the reported amounts of assets, liabilities, income and expenses. Actual results may differ from these estimates.

Estimates and underlying assumptions are reviewed on an ongoing basis. Revisions to accounting estimates are recognised in the period in which the estimate is revised and in any future periods affected.

Accounting Policies

(b) Property, Plant & Equipment

Each class of property, plant and equipment is carried at cost or in the case of donated assets, at valuation as assessed by the Management Committee.

Plant and Equipment are measured on the cost basis, less accumulated depreciation and impairment costs. The cost of fixed assets constructed by the Association includes cost of materials and direct labour costs.

The carrying amount of plant and equipment is reviewed annually by the Committee to ensure that it is not in excess of the recoverable amount from those assets.

COLLINGWOOD CHILDREN'S FARM INCORPORATED
A.B.N. 41 355 818 979

NOTES TO AND FORMING PART OF THE FINANCIAL STATEMENTS
FOR THE YEAR ENDED 30TH JUNE 2019

(b) Property, Plant & Equipment (cont'd)

The recoverable amount is assessed on the basis of the expected net cash flows that will be received from the assets' employment and subsequent disposal. The expected net cash flows have been discounted to their present values in determining recoverable amounts.

The depreciable amount of all fixed assets are depreciated on a straight-line basis over the useful lives of the assets to the farm as determined by the Management Committee.

The depreciation rates used for each class of assets are:

| | | |
|----------------------|---|-------|
| Buildings & Shelters | - | 6.7% |
| Tools & Equipment | - | 20% |
| Truck & Horse Float | - | 15% |
| Fencing | - | 18.8% |
| Office Equipment | - | 25% |
| Canteen Equipment | - | 20% |

The assets' residual values and useful lives are reviewed and adjusted, if appropriate, at each balance date.

An asset's carrying amount is written down immediately to its recoverable amount if the asset's carrying amount is greater than its estimated recoverable amount. Gains and losses on disposals are determined by comparing proceeds with the carrying amount.

(c) Donations in Kind

The financial report attempts to recognise the cost of donated fixed assets and livestock and the cost of labour and materials donated to the Farm during the financial year in respect of major capital projects. The cost value attached to donations in kind has been assessed by the Management Committee.

(d) Livestock

Livestock has been valued in the financial report at the lower of cost or market value. Where livestock has been donated, the value has been assessed as market value and taken up as donations in kind. Where livestock has resulted from natural increase, market value has been attached to stock on hand at balance date. The value of livestock on hand at balance date has been adjusted to reflect sales and stock losses during the year.

(e) Leases

Lease payments for operating leases where substantially all the risks and benefits remain with the lessee are recognized as expenses on a straight-line basis over the term of the lease term. The only operating lease entered into by the farm relates to lease of telephone services.

COLLINGWOOD CHILDREN'S FARM INCORPORATED
A.B.N. 41 355 818 979
NOTES TO AND FORMING PART OF THE FINANCIAL STATEMENTS
FOR THE YEAR ENDED 30TH JUNE 2019

(f) **Financial Instruments**

Initial Recognition and Measurement

Financial assets and financial liabilities are recognised when the entity becomes a party to the contractual provisions to the instrument. For financial assets, this is equivalent to the date that the company commits itself to either purchase or sell the asset (i.e. trade date accounting is adopted). Financial instruments are initially measured at fair value which includes transaction costs, when the related contractual rights or obligations exist. Subsequent to initial recognition these instruments are measured as set out below.

Financial assets at fair value through profit and loss

A financial asset is classified in this category if acquired principally for the purpose of selling in the short-term or if so designated by management. Derivatives are also categorised as held for trading unless they are designated as hedges. Realised and unrealised gains and losses arising from changes in the fair value of these assets are included in the income statement in the period in which they arise.

Financial liabilities

Non-derivative financial liabilities are recognised at amortised cost, comprising original debt less principal payments and amortisation. Gains or losses are recognised in profit or loss through the amortization process and when the financial liability is derecognised.

Impairment

At each reporting date, the Committee assess whether there is objective evidence that a financial instrument has been impaired. In the case of available-for-sale financial instruments, a prolonged decline in the value of the instrument is considered to determine whether an impairment has arisen. Impairment losses are recognised in the income statement. In the case of available-for-sale financial assets, a significant or prolonged decline in the market value of the instrument is considered to constitute a loss event. Impairment losses are recognised in profit or loss immediately. Also, any cumulative decline in fair value previously recognised in other comprehensive income is reclassified into profit or loss at this point.

(g) **Impairment of Assets**

At each reporting date, the Committee reviews the carrying values of its tangible and intangible assets to determine whether there is any indication that those assets have been impaired. If such an indication exists, the recoverable amount of the asset, being the higher of the asset's fair value less costs to sell and value-in-use, is compared to the asset's carrying value. Any excess of the asset's carrying value over its recoverable amount is expensed to the income statement. Where it is not possible to estimate the recoverable amount of an individual asset, the Committee estimates the recoverable amount of the cash generating unit to which the asset belongs.

(h) **Short-Term Employee Benefits**

Provision is made for the company's obligation for short-term benefits. The Farm's obligations for short-term employee benefits such as wages, salaries and sick leave are recognised as part of accounts payable in the Statement of Financial Position.

COLLINGWOOD CHILDREN'S FARM INCORPORATED
A.B.N. 41 355 818 979
NOTES TO AND FORMING PART OF THE FINANCIAL STATEMENTS
FOR THE YEAR ENDED 30TH JUNE 2019

(i) Employee Provisions

Provision is made for the Farm's liability for employee entitlements arising from services rendered by employees to balance date. Employee entitlements expected to be settled within one year together with entitlements arising from wages and salaries, annual leave and personal leave which will be settled after one year, have been measured at their nominal amount. Other employee entitlements payable later than one year have been measured at the present value of the estimated future cash outflows to be made for those entitlements. Contributions are made by the Farm to an employee superannuation fund and are charged as expenses when incurred.

(j) Cash and Cash Equivalents

Cash and cash equivalents include cash on hand, deposits held at call with banks, other short-term highly liquid investments. Cash on deposit includes short term bank deposits with maturing dates of less than twelve months.

(k) Accounts Receivable and other Debtors

Accounts receivable and other debtors include amounts due from members as well as amounts receivable from customers for entry fees and prepayments. Receivables are expected to be collected within 12 months of the end of the reporting period. All other receivables are classified as non-current assets.

(l) Revenue

Revenue from the sale of goods is recognised upon the delivery of goods to customers. Revenue from the Collingwood Children's Farm/Abbotsford Convent car park is brought to account annually on receipt of income.

Revenue from the rendering of a service is recognised upon the delivery of the service.

Non-Reciprocal grant revenue is recognised in the Profit and Loss when the entity obtains control of the grant can be measured reliably. If conditions are attached to the grant which must be satisfied before it is eligible to receive the contribution, the recognition of the grant as revenue will be deferred until the conditions are satisfied.

Interest revenue is recognised on a proportional basis taking into account the interest rates applicable to the financial assets.

Dividend revenue is recognised when the right to receive a dividend has been established.

Donations and bequests are recognised as revenue when received.

All revenue is stated net of the amount of goods and services tax (GST).

COLLINGWOOD CHILDREN'S FARM INCORPORATED
A.B.N. 41 355 818 979

NOTES TO AND FORMING PART OF THE FINANCIAL STATEMENTS
FOR THE YEAR ENDED 30TH JUNE 2019

(m) Goods and Services Tax (GST)

Revenues, expenses and assets are recognised net of the amount of GST, except where the amount of GST incurred is not recoverable from the Australian Taxation Office. In these circumstances the GST is recognised as part of the cost of the asset or as part of an item of expense. Receivables and Payables are stated inclusive of the amount of GST receivable or payable. The net amount of GST recoverable from, or payable to the ATO is included with other receivables or payables in the Statement of Financial Position.

Cash Flows are included in the Statement of Cash Flows on a gross basis. The GST components of Cash Flows arising from investing and financing activities which are recoverable from, or payable to the ATO are classified as Operating Cash Flows.

(n) Comparative Figures

When required by Accounting Standards, comparative figures have been adjusted to conform to changes in presentation for the current financial year.

(o) Trade and Other Payables

Trade and other payables represent the liability outstanding at the end of the reporting period for goods and services received by the Association during the reporting period that remain unpaid. The balance is recognized as a current liability with the amounts normally paid within 30 days of recognition of the liability.

(p) Critical Accounting Estimates and Judgments

The Committee members evaluate estimates and judgments incorporated into the financial report based on historical knowledge and best available current information. Estimates assume a reasonable expectation of future events and are based on current trends and economic data, obtained both internally and externally.

(q) Key Estimates

The Association assesses impairment at the end of each reporting period by evaluation of conditions and events specific to the Association that may be indicative of impairment triggers. Recoverable amounts of relevant assets are re-assessed using value-in-use calculations which incorporate various key assumptions.

(r) Income Tax

No provision for income tax has been raised as the entity is exempt from income tax under Division 50 of the Income Tax Assessment Act 1997.

COLLINGWOOD CHILDREN'S FARM INCORPORATED
A.B.N. 41 355 818 979

NOTES TO AND FORMING PART OF THE FINANCIAL STATEMENTS
FOR THE YEAR ENDED 30TH JUNE 2019

| | 2019 | 2018 |
|--|----------|---------|
| | \$ | \$ |
| Note 2: Net Current Year Surplus: | | |
| (a) <u>Expenses</u> | | |
| Depreciation and Amortisation | | |
| - Plant and Equipment | 76,806 | 107,037 |
| - Software | - | - |
| | <hr/> | <hr/> |
| Total Depreciation and Amortisation | 76,806 | 107,037 |
| | ===== | ===== |
| Employee Provisions | 11,010 | 32,354 |
| Audit Fees | 7,200 | 6,800 |
| (b) <u>Significant Revenue</u> | | |
| <p>The following significant revenue items are relevant in explaining the Financial performance:</p> | | |
| - Grants – Local Government | 64,960 | 64,000 |
| - State Government | 123,378 | 112,269 |
| - Carpark Revenue | 162,483 | 157,561 |
| - Entry Fees | 655,981 | 584,460 |
| | <hr/> | <hr/> |
| Note 3: Cash Flow Information | | |
| Reconciliation of Net cash used in operating activities with net surplus from ordinary activities: | | |
| (Loss)/Surplus from Ordinary Activities | 1,581 | 53,060 |
| Non-Cash flows in Surplus from Ordinary Activities: | | |
| Depreciation | 76,806 | 107,037 |
| Provision for employee entitlements | 11,010 | 532 |
| Provision for diminution in value of investments | - | - |
| Changes in assets and liabilities | | |
| (increase)/decrease In value investments | (2,362) | 1,595 |
| (Increase)/Decrease in Accounts Receivable | (51,890) | (4,323) |
| (Increase)/Decrease in Livestock | (5,510) | 13,955 |
| Increase/(Decrease) in Accounts Payable | (29,685) | 25,466 |
| Increase/(Decrease) in Grants Received in Advance | 22,176 | - |
| | <hr/> | <hr/> |
| Net cash used in Operating and Investment Activities | 22,126 | 197,322 |
| | <hr/> | <hr/> |

These notes should be read in conjunction with the attached Audit Report of David L. Ackland dated 25th September 2019

COLLINGWOOD CHILDREN'S FARM INCORPORATED
A.B.N. 41 355 818 979

NOTES TO AND FORMING PART OF THE FINANCIAL STATEMENTS
FOR THE YEAR ENDED 30TH JUNE 2019

| | 2019 | 2018 |
|--|-------------|-------------|
| Note 4: Auditor's Remuneration | | |
| Remuneration of the auditor of the association for: | | |
| - auditing or reviewing the financial report | 7,200 | 6,800 |
| - other services | 1,600 | 2,300 |
| - due diligence services | - | - |
| - taxation services provided by related practice of auditor | - | - |
| | | |
| Note 5: Cash and Cash Equivalents | | |
| Cash at bank and in hand – Unrestricted | 294,989 | 318,490 |
| Short-term bank deposits | 916,374 | 901,643 |
| | 1,211,363 | 1,220,133 |
| | ===== | ===== |
| | | |
| Reconciliation of Cash: | | |
| Cash at end of the financial year reconciled to items in the Statement of Financial Position as follows: | | |
| Cash on Hand | 900 | 1,100 |
| Cash at Bank – Unrestricted | 1,210,463 | 1,219,033 |
| | 1,211,363 | 1,220,133 |
| | ===== | ===== |
| | | |
| Note 6: Livestock | | |
| Livestock on hand at beginning of year | 29,900 | 43,855 |
| Livestock Purchases | - | - |
| Livestock – Donations in kind during year | - | - |
| | 29,900 | 43,855 |
| Less: Sales | | |
| Increase/(Decrease) in value of livestock on Hand at balance date | 5,510 | (13,955) |
| | 35,410 | 29,900 |
| Livestock on hand at end of year (at fair value) | 35,410 | 29,900 |
| | ----- | ----- |
| | | |
| Note 7: <u>Accounts Receivable and other Debtors</u> | | |
| <u>Current</u> | 2019 | 2018 |
| Accounts Receivable | 65,860 | 13,970 |
| Contributions Receivable | - | - |
| Total current accounts receivable and other debtors | 65,860 | 13,970 |
| | ===== | ===== |
| | | |
| No impairment was required at 30 th June 2019 | | |

These notes should be read in conjunction with the attached Audit Report of David L. Ackland dated 25th September 2019

COLLINGWOOD CHILDREN'S FARM INCORPORATED
A.B.N. 41 355 818 979

NOTES TO AND FORMING PART OF THE FINANCIAL STATEMENTS
FOR THE YEAR ENDED 30TH JUNE 2019

Note 7: Accounts Receivable & other debtors (cont'd) -

Credit Risk

The following table details the association's contributions and other debtors receivable exposed to credit risk with ageing analysis and impairment provided for thereon. Amounts are considered as "past due" when the debt has not been settled within the terms and conditions agreed between the association and the member or counterparty to the transaction. Receivables that are past due are assessed for impairment by ascertaining their willingness to pay and are provided for where there are specific circumstances indicating that the debt may not be fully repaid to the association. All members late in paying their subscription are potentially subject to a late fee.

The balances of receivables that remain within initial terms (as detailed in the table) are considered to be of high credit quality.

| | Gross Amount | Past Due & Impaired | Past Due but not Impaired (days overdue) | | | | Within Initial Trade Terms |
|--------------------------------------|---------------|---------------------|---|--------------|--------------|---------------|----------------------------|
| | | | < 30 | 31-60 | 61-90 | >90 | |
| 2019 | \$ | \$ | \$ | \$ | \$ | \$ | \$ |
| Contributions (member receivable) | | - | - | - | - | - | - |
| Other Debtors | 65,860 | - | 35,151 | 5,839 | 8,964 | 15,906 | 40,990 |
| Total | 65,860 | - | 35,151 | 5,839 | 8,964 | 15,906 | 40,990 |

*These notes should be read in conjunction with the attached Audit Report of
David L. Ackland dated 25th September 2019*

COLLINGWOOD CHILDREN'S FARM INCORPORATED**A.B.N: 41 355 818 979****NOTES TO AND FORMING PART OF THE FINANCIAL STATEMENTS**
FOR THE YEAR ENDED 30TH JUNE 2019**Note 7: Accounts Receivable & other debtors (cont'd)**

| | Gross Amount | Past Due & Impaired | Past Due but not Impaired (days overdue) | | | | Within Initial Trade Terms |
|--|-------------------|------------------------|--|-------------------|-------------------|-------------------|----------------------------------|
| | | | < 30 | 31-60 | 61-90 | >90 | |
| 2018 | \$ | \$ | \$ | \$ | \$ | \$ | \$ |
| Contributions (member receivable) 13,970 | | - | 13,970 | - | - | - | 13,970 |
| Other Debtors - | | - | - | - | - | - | - |
| | <u> </u> | <u> </u> | <u> </u> | <u> </u> | <u> </u> | <u> </u> | <u> </u> |
| Total | 13,970 | - | 13,970 | - | - | - | 13,970 |
| | <u> </u> | <u> </u> | <u> </u> | <u> </u> | <u> </u> | <u> </u> | <u> </u> |

Collateral held as security.

No collateral is held as security for any of the accounts receivable or other debtor balances.

| | 2019 | 2018 |
|---|--------|--------|
| | \$ | \$ |
| Financial Assets classified as loans and receivables | | |
| Accounts receivable and other debtors: | | |
| - total current | 65,860 | 13,970 |
| | ===== | ===== |

COLLINGWOOD CHILDREN'S FARM INCORPORATED**A.B.N. 41 355 818 979****NOTES TO AND FORMING PART OF THE FINANCIAL STATEMENTS****FOR THE YEAR ENDED 30TH JUNE 2019**

| | 2019 | 2018 |
|--|----------------|----------------|
| Note 8: Investments | | |
| Units in Public Funds & Trusts (at market value) | 111,347 | 108,985 |
| Less: Provision for diminution in market value | - | - |
| | <u>111,347</u> | <u>108,985</u> |
| Other Investments (at cost) | 2 | 2 |
| | <u>111,349</u> | <u>108,987</u> |

Note 9 : Property, Plant & Equipment

Movements in Carrying Amounts

Movements in the carrying amounts of each class of property, plant and equipment between the beginning and the end of the current financial year.

| | Farm Buildings Shelters \$ | Farm and Equipment \$ | Fencing \$ | Office & Canteen & Equipment \$ | Farm Development \$ | Total \$ |
|--|-------------------------------------|--------------------------------|---------------|--|---------------------------|----------------|
| Balance at the beginning of the year | 532,833 | 8,768 | 7,132 | 5,028 | - | 553,761 |
| Additions | 2,694 | 18,907 | - | 9,295 | - | 30,896 |
| Depreciation | (68,716) | (4,245) | (1,426) | (2,419) | - | (76,806) |
| Carrying Amount at the end of the year | <u>466,811</u> | <u>23,430</u> | <u>5,706</u> | <u>11,904</u> | <u>nil</u> | <u>507,851</u> |

These notes should be read in conjunction with the attached Audit Report of David L. Ackland dated 25th September 2019

COLLINGWOOD CHILDREN'S FARM INCORPORATED
A.B.N. 41 355 818 979

NOTES TO AND FORMING PART OF THE FINANCIAL STATEMENTS
FOR THE YEAR ENDED 30TH JUNE 2019

| Note 10: Accounts and Other Payables | 2019 | 2018 |
|--|----------------|----------------|
| CURRENT | | |
| Unsecured liabilities: | | |
| Trade payables, sundry payables & accrued expenses | 68,720 | 82,461 |
| Grant received in advance | 22,176 | - |
| Employee benefits – Provision | 115,962 | 84,369 |
| | <u>206,858</u> | <u>166,830</u> |
| | ===== | ===== |
| (a) Financial Liabilities at amortised cost classified as trade and other payables | | |
| Trade and other payables | | |
| - total current | 206,858 | 166,830 |
| - total non-current | 63,436 | 84,018 |
| | <u>270,294</u> | <u>250,848</u> |
| Less: Grants Received in advance | (22,176) | - |
| Less: Employee Provisions | (179,398) | (168,387) |
| | <u>68,720</u> | <u>82,461</u> |
| | ===== | ===== |
| Collateral pledged | | |
| No collateral has been pledged for any of the trade and other payable balances | | |

COLLINGWOOD CHILDREN'S FARM INCORPORATED
A.B.N. 41 355 818 979

NOTES TO AND FORMING PART OF THE FINANCIAL STATEMENTS
FOR THE YEAR ENDED 30TH JUNE 2019

| | 2019 | 2018 |
|--|----------------|----------------|
| | \$ | \$ |
| Note 11 : Capital Grants and Donations | | |
| Balance at the beginning of the financial year | 214,796 | 214,796 |
| Transfer from Accumulated Deficiency | | |
| - Capital grants and donations received during year | - | - |
| <i>Balance at the end of the financial year</i> | <u>214,796</u> | <u>214,796</u> |
| Note 12: Capital Profits Reserve | | |
| Balance at the beginning of the financial year | 44,027 | 44,027 |
| Movements during the year | - | - |
| <i>Balance at the end of the financial year</i> | <u>44,027</u> | <u>44,027</u> |

COLLINGWOOD CHILDREN'S FARM INCORPORATED**A.B.N. 41 355 818 979****NOTES TO AND FORMING PART OF THE FINANCIAL STATEMENTS****FOR THE YEAR ENDED 30TH JUNE 2019**

| | 2019 \$ | 2018 \$ |
|---|------------------|------------------|
| Note 13 : Accumulated Surplus (Deficiency) | | |
| Accumulated Surplus/(deficiency) at the beginning of the financial year | 1,401,135 | 1,364,019 |
| Net surplus/(Loss) attributable to the Association | 1,581 | 53,060 |
| Transfer to Capital Grants & Donations | - | - |
| <i>Accumulated Surplus at the end of the financial year</i> | <u>1,402,716</u> | <u>1,417,079</u> |
| Note 14 : Contingent Liabilities & Contingent Assets | NIL | NIL |
| Note 15 : Leasing Commitments | | |
| Non-cancellable operating leases contracted for but Not capitalized in the financial statements – payable | | |
| Not later than 12 months | 3,888 | 2,529 |
| Later than 12 months less than 5 years | 11,989 | - |

Note 16: Events after the Reporting Period

No significant events have occurred since balance date which would materially affect the Statement of Financial Position for the year ended 30th June 2019.

COLLINGWOOD CHILDREN'S FARM INCORPORATED
A.B.N. 41 355 818 979

NOTES TO AND FORMING PART OF THE FINANCIAL STATEMENTS
FOR THE YEAR ENDED 30TH JUNE 2019

Note 17: Related Party Transactions

Key Management & Other Related Parties

Any person having authority and responsibility for planning directing and controlling the activities of the Association directly or indirectly, including its committee members, is considered key management personnel.

Key Management personnel compensation

| | | | |
|----------------------------|-------|-------|--|
| - Short term benefits | - | - | |
| - Post-employment benefits | - | - | |
| | ----- | ----- | |
| | - | - | |
| | ----- | ----- | |

Note 18 : Financial Instruments

The treasurer's overall risk management strategy seeks to ensure that the association meets its financial targets, whilst minimizing potential adverse effects of cash flow shortfalls

Specific Financial Risk Exposures and Management

The main risks the association is exposed to through its financial instruments are interest rate risk, liquidity risk, credit risk and equity price risk.

a. Interest rate risk

The association is not exposed to any significant interest rate risk since cash balances are maintained at variable rates and borrowings of the association are not considered significant.

b. Liquidity risk

Liquidity risk arises from the possibility that the association might encounter difficulty in settling its debts or otherwise meeting its obligations related to financial abilities. The association manages this risk through the following mechanisms:

- * preparing forward-looking cash flow analysis in relation to its operational, investing and financing activities;
- * only investing surplus cash with major financial institutions; and
- * proactively monitoring the recovery of unpaid trade debtors.

c. Foreign exchange risk

The association is not exposed to fluctuations in foreign currencies.

COLLINGWOOD CHILDREN'S FARM INCORPORATED
A.B.N. 41 355 818 979

NOTES TO AND FORMING PART OF THE FINANCIAL STATEMENTS
FOR THE YEAR ENDED 30TH JUNE 2019

d. **Credit risk**

Exposure to credit risk relating to financial assets arises from the potential non-performance by counterparties of contract obligations that could lead to a financial loss to the association.

Credit risk is managed through maintaining procedures ensuring, to the extent possible, that members and counterparties to transactions are of sound credit worthiness.

Risk is also minimized through investing surplus funds in financial institutions that maintain a high credit rating or in entities that the committee has otherwise cleared as being financially sound.

Credit risk exposures

The maximum exposure to credit risk by class of recognized financial assets at balance date is equivalent to the carrying value and classification of those financial assets (net of any provisions) as presented in the Statement of Financial Position.

There is no collateral held by the association securing trade and other receivables.

The association has no significant concentration of credit risk with any single counterparty or group of counterparties.

Trade and other receivables that are neither past due or impaired are considered to be of high credit quality.

e. **Price risk**

Price risk relates to the risk that the fair value or future cash flows of a financial instrument will fluctuate because of changes in market prices largely due to demand and supply factors for commodities.

The association is exposed to securities price risk on available-for-sale investments. Such risk is managed through investments held in a diversified management fund.

COLLINGWOOD CHILDREN'S FARM INCORPORATED
A.B.N. 41 355 818 979

NOTES TO AND FORMING PART OF THE FINANCIAL STATEMENTS
FOR THE YEAR ENDED 30TH JUNE 2019

f. Net Fair Values

Fair Value Estimation

The fair values of financial assets and financial liabilities are presented in the following table and can be compared to their carrying values as presented in the Statement of Financial Position. Fair values are those amounts at which an asset could be exchanged, or a liability settled, between knowledgeable, willing parties in an arm's length transaction. Areas of judgment and the assumptions used have been detailed below. Where possible, valuation information used to calculate fair value is extracted from the market, with more reliable information available from markets that are actively traded.

| | Note | 2019 | | 2018 | |
|------------------------------------|------|--------------------------|----------------------|--------------------------|----------------------|
| | | Net Carrying Value \$ | Net Fair Value \$ | Net Carrying Value \$ | Net Fair Value \$ |
| Financial Assets | | | | | |
| Cash & Cash equivalents | | 294,089 | 294,089 | 318,490 | 318,490 |
| Short term term deposits | | 916,374 | 916,374 | 901,643 | 901,643 |
| Accounts Receivable | | 65,860 | 65,860 | 13,970 | 13,970 |
| Investments – available for sale | | 111,349 | 111,349 | 108,987 | 108,987 |
| Total financial assets | | 1,387,672 | 1,387,672 | 1,343,090 | 1,343,090 |
| Financial Liabilities | | | | | |
| Trade & other payables | | 68,720 | 68,720 | 82,461 | 82,461 |
| Total financial liabilities | | 68,720 | 68,720 | 82,461 | 82,461 |

Financial assets pledged as collateral.

No financial assets have been pledged as security for any financial liability

| | 2019 | 2018 |
|-------------------------------------|---------|---------|
| Financial Assets | | |
| Available for sale financial assets | 111,349 | 108,987 |
| | ===== | ===== |

The fair value of these Financial Assets has been based on the closing bid prices at the end of the reporting period, excluding transaction costs.

COLLINGWOOD CHILDREN'S FARM INCORPORATED
A.B.N. 41 355 818 979

NOTES TO AND FORMING PART OF THE FINANCIAL STATEMENTS
FOR THE YEAR ENDED 30TH JUNE 2019

Note 19 : Farm Details

The registered office of the association is:

Collingwood Children's Farm Incorporated
18 St. Hilliers Street
Abbotsford Vic 3067

The principal place of business is:

Collingwood Children's Farm Incorporated
18 St. Hilliers Street
Abbotsford Vic 3067

COLLINGWOOD CHILDREN'S FARM INCORPORATED
A.B.N. 41 355 818 979

STATEMENT BY MANAGEMENT COMMITTEE

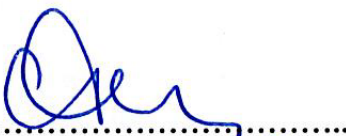
In accordance with a resolution of the committee of the Collingwood Children's Farm Incorporated, the members of the committee declare that:

1. the financial statements as set out on pages 2 – 25 present a true and fair view of the financial position of the Collingwood Children's Farm Incorporated as at 30th June 2019 and its performance for the year ended on that date in accordance with the accounting policies described in Note 1 to the financial statements and the requirements of the Association Incorporated Reform Act 2012.
2. At the date of this statement there are reasonable grounds to believe that the Collingwood Children's Farm Incorporated will be able to pay its debts as and when they fall due.

This statement is signed for and on behalf of the committee by :-



.....
President - Lachlan Turner



.....
Farm Manager – Conor Hickey

Dated this: 25th September 2019

INDEPENDENT AUDIT REPORT TO THE MEMBERS OF

COLLINGWOOD CHILDREN'S FARM INCORPORATED

A.B.N. 41 355 818 979

REPORT ON THE AUDIT OF THE FINANCIAL REPORT

Opinion

I have audited the financial report of the Collingwood Children's Farm Incorporated which comprises the Statement of financial position as at 30th June 2019 the statement of profit or loss and other comprehensive income, statement of changes in equity and statement of income and expenditure for the year then ended, notes comprising a summary of significant accounting policies and other explanatory information, and the statement by member of the committee.

In my opinion, the accompanying financial report of the Collingwood Children's Farm has been prepared in accordance with Div. 60 of the Australian Charities and Not-for-profits Commission Act 2012 (ACNC Act), including:

- (i) Giving a true and fair view of the registered entity's financial position as at 30th June 2019 and of its financial performance for the year then ended; and
- (ii) Complying with Australian Accounting Standards to the extent described in Note 1, and Div. 60 of the Australian Charities and Not-for-profits Commission Regulation 2013.

Basis for Opinion

I conducted my audit in accordance with Australian Auditing Standards. My responsibilities under those standards are further described in the Auditor's Responsibilities for the Audit of the Financial Report section of my report. I am independent of the registered entity in accordance with the ACNC Act, the ethical requirements of the Accounting Professional and Ethical Standards Board's APES 110: Code of Ethics for Professional Accountants (the Code) that are relevant to my audit of the financial report in Australia. I have also fulfilled our other ethical responsibilities in accordance with the Code.

I believe that the audit evidence I have obtained is sufficient and appropriate to provide a basis for my opinion.

Emphasis of Matter – Basis of Accounting

I draw attention to Note 1 to the financial report, which describes the basis of accounting. The financial report has been prepared for the purpose of fulfilling the registered entity's financial reporting responsibilities under the Australian Charities and Not-for-profits Commission Act 2012. As a result, the financial report may not be suitable for another purpose. My opinion is not modified in respect of this matter.

Responsibilities of the Committee of Management

The committee of management of the registered entity are responsible for the preparation of the financial report that gives a true and fair view and have determined that the basis of preparation described in Note 1 to the financial report is appropriate to meet the requirements of the Australian Charities and Not-for-profits Commission Act 2012 and is appropriate to meet the needs of the members. The committee's responsibility also includes such internal control as the directors determine is necessary to enable the preparation of a financial report that gives a true and fair view and is free from material misstatement, whether due to fraud or error.

INDEPENDENT AUDIT REPORT TO THE MEMBERS OF

COLLINGWOOD CHILDREN'S FARM INCORPORATED

A.B.N. 41 355 818 979

REPORT ON THE AUDIT OF THE FINANCIAL REPORT (CONT'D)

In preparing the financial report, the committee are responsible for assessing the registered entity's ability to continue as a going concern, disclosing, as applicable, matters relating to going concern and using the going concern basis of accounting unless the committee either intend to liquidate the registered entity or to cease operations, or have no realistic alternative but to do so.

Auditor's Responsibilities for the Audit of the Financial Report

My objectives are to obtain reasonable assurance about whether the financial report as a whole is free from material misstatement whether due to fraud or error, and to issue an auditor's report that includes my opinion. Reasonable assurance is a high level of assurance, but is not a guarantee that an audit conducted in accordance with the Australian Auditing Standards will always detect a material misstatement when it exists. Misstatements can arise from fraud or error and are considered material if, individually or in the aggregate, they could reasonably be expected to influence the economic decisions of users taken on the basis of this financial report.

As part of an audit in accordance with the Australian Auditing Standards, I exercise professional judgment and maintain professional skepticism throughout the audit. I also:

- Identify and assess the risks of material misstatement of the financial report, whether due to fraud or error, design and perform audit procedures responsive to those risks, and obtain audit evidence that is sufficient and appropriate to provide a basis for my opinion. The risk of not detecting a material misstatement resulting from fraud is higher than for one resulting from error, as fraud may involve collusion, forgery, intentional omissions, misrepresentations, or the override of internal control.
- Obtain an understanding of internal control relevant to the audit in order to design audit procedures that are appropriate in the circumstances, but not for the purpose of expressing an opinion on the effectiveness of the company's internal control.
- Evaluate the appropriateness of accounting policies used and the reasonableness of accounting estimates and related disclosures made by the committee.
- Conclude on the appropriateness of the committee's use of the going concern basis of accounting and, based on the audit evidence obtained, whether a material uncertainty exists related to events or conditions that may cast significant doubt as to the company's ability to continue as a going concern. If I conclude that a material uncertainty exists, I am required to draw attention in my auditor's report to the related disclosures in the financial report or, if such disclosures are inadequate to modify my opinion. My conclusions are based on the audit evidence obtained up to the date of my auditor's report. However, future events or conditions may cause the registered entity to cease to continue as a going concern.
- Evaluate the overall presentation, structure and content of the financial report, including the disclosures, and whether the financial report represents the underlying transactions and events in a manner that achieves fair presentation.

INDEPENDENT AUDIT REPORT TO THE MEMBERS OF

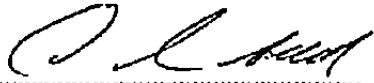
COLLINGWOOD CHILDREN'S FARM INCORPORATED

A.B.N. 41 355 818 979

REPORT ON THE AUDIT OF THE FINANCIAL REPORT (CONT'D)

- Obtain sufficient appropriate audit evidence regarding the financial information of the farm's activities to express an opinion on the financial report.

I communicate with the farm manager, regarding, among other matters, the planned scope and timing of the audit and significant audit findings, including any significant deficiencies in internal control that I identify in my audit.



.....
DAVID L. ACKLAND
CHARTERED ACCOUNTANT

LINDSAY ILES & CO.
LEVEL 2
105 QUEEN STREET
MELBOURNE

DATED: 25th September 2019